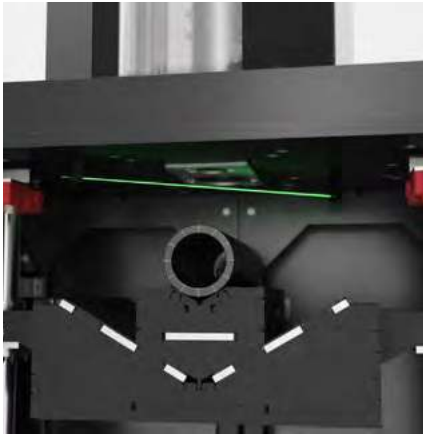


# SCITEQ

QUALITY TEST EQUIPMENT



EXPERTS IN PIPE TESTING  
We help you perform even better



Providing comfort  
in product quality,  
through state-of-  
the-art testing  
equipment



## ABOUT US

# Made in Denmark since 1966

With more than 50 years' experience, SCITEQ A/S is one of the world's leading specialists in process control and test equipment for the plastic pipe industry. We adapt to the ever changing demands and requirements in the international testing standards.

Our solutions are in-house engineered, manufactured and installed by SCITEQ Denmark.

## WHAT WE DO

# Shaping the future in testing equipment

Our global customers are the industry leaders and the local specialized manufacturers of pipes & fittings, the raw material suppliers as well as the independent and national test institutes. We help our customers in all aspects – when planning a complete turnkey laboratory or extending the test lab with a single product.

Working closely together with our highly skilled customers inspire us to continuously develop solutions that optimizes test procedures and enables our customers to perform even better.

We acknowledge the importance of moving forward and being innovative and we take pride in providing our customers with the most durable and future-proof solutions in the market. The way we put it: "The best way to predict the future is to invent it"

## ABOUT US

# Local focus with global orientation

SCITEQ is represented in more than 40 countries around the globe. Our network of experienced agents assists our customers locally in close cooperation with the SCITEQ project team. Together we identify the correct solution suitable to the needs of our customers and according to the local standards.



# Engineering Excellence



## In-house R&D

In addition to in-house resources, SCITEQ R&D consists of team members from SCITEQ co-owner BIIR Engineering offering big scale engineering resources with over 300 highly skilled European engineers. BIIR is a multidisciplinary team of engineers, project managers and designers working together as one powerful and very flexible unit and according to ISO 9001:2015.

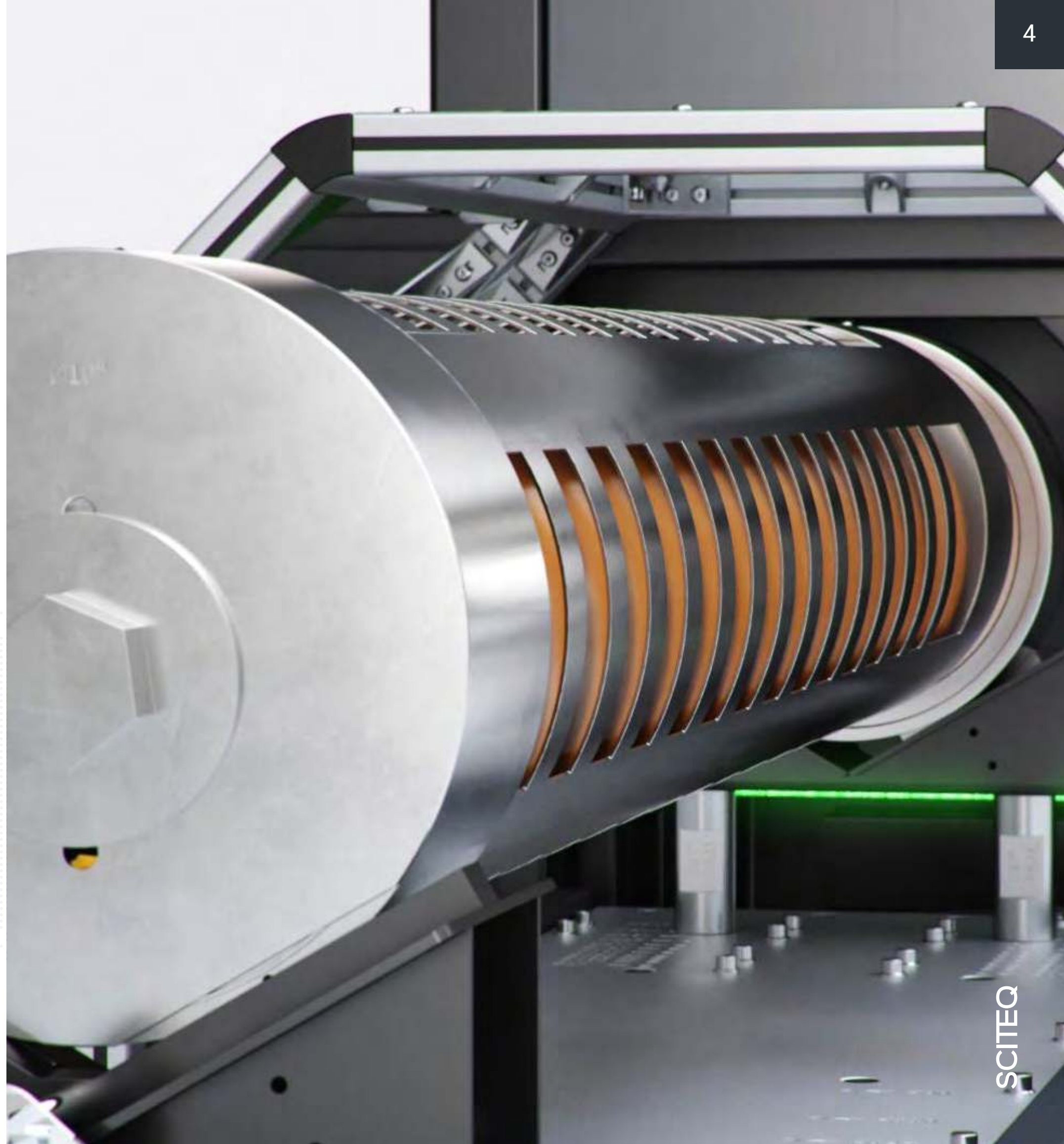


## Innovative solutions

We acknowledge the importance of being innovative. Our team of in-house engineers and technicians are continuously looking at new technologies in order to improve the capabilities of the SCITEQ solutions.

“We give our partners the tools to manufacture according to the highest standards, while at the same time helping them to do so as cost-effectively as possible”.

**Thomas Skipper Klausen, SCITEQ CEO**



## WHAT WE DO

# Helping you perform even better

We make sure you get accurate and reliable test results as easy and cost-efficiently as possible. You can rely on your SCITEQ equipment is up and running - all the time. Your performance is our concern.

## ■ A wide range of quality products

We supply complete laboratory solutions or single products in the scope of Pipe & fitting testing, Raw material testing and Preparation for testing

## ■ Cost-efficient testing

We provide you with the tools to manufacture according to the highest standards, while at the same time helping you to do so as cost-efficiently as possible.

## ■ 360° service

You will achieve higher efficiency, high test reliability and a long life-time on your equipment. The SCITEQ service engineers perform global on-site commissioning and training, on-site & on-line support as well as yearly calibration and maintenance visits.

# A simple process

Our team of experienced project managers and engineers will help you get there in only three steps. We make it simple for you.



**Analyzing the need**  
Determine the scope



**Delivering the solution**  
Building the equipment



**Installing the equipment**  
Commissioning & training







## SOFTWARE

# Industry 4.0

SCITEQ test solutions consists of both hardware and software ensuring delivery of reliable test data. Our solutions are helping our customers prepare for IoT and Industry 4.0. We are developing cloud based communication with both online and local data storing according to our customers preferences.

## New generation of pressure testing

The latest development in software for pressure testing allows for easy and intuitive operation. Quick-to-set-up recipes as well as optimized real time monitoring & logging enabling comprehensive analysis option.

“We provide our customers with a new and revolutionary approach to the operation of pressure testing”.

**Thomas Skipper Klausen, SCITEQ CEO**





## WHAT WE DO

# A Chain of Quality

SCITEQ designs are manufactured in Denmark, in high performance production facilities and by SCITEQ skilled staff with an uncompromising attitude to quality. SCITEQ co-owner Damgaard A/S enables us to offer shortest lead time in the market due to the SCITEQ dedicated production lines, In-house sourcing department and high-speed laser cutting machines.

## Carefully chosen subcontractors

In order to provide the best solutions for our customers, we use a range of carefully selected subcontractors primarily in Denmark and Germany like Danfoss, Grundfoss, ABB, Siemens. OEM solutions are designed in close collaboration with SCITEQ R&D.



THERMAL CYCLIC TESTER



## SERVICE &amp; SUPPORT

# Our service offerings

Whether you are managing a large test layout or operating one test device, we are at your service in all aspects. And if you are looking for advice on how to get started testing, you can trust us to guide you.



## Installation & Commissioning

Specialized SCITEQ technicians perform onsite installation and commissioning of your SCITEQ equipment as well as training of your operating personnel at different user levels.



## Calibrations & updates

We take care of the annual calibration using internationally traceable instruments and we make sure your staff is updated. We support your new team members with extra training.



## Training & operation

We offer on-site training of your operating personnel with focus on operation, maintenance and trouble-shooting. Training and operation manuals in your local language is naturally possible.



## Service Packages

We offer several Service Packages suitable for all types of applications, from large test laboratories to smaller test departments. The list of benefits and discounts included in the Service Packages is tailored to fit your needs.



## Support on-line & on-site

We offer on-line and on-site technical support for fast and effective troubleshooting and advice. Updating software is done online for your convenience, direct access via i.e. Team Viewer for highest level of urgent support.



## Shop online

Need fast delivery of new parts for your equipment due to wear and tear or looking for new accessories or fittings. You can quickly find the part you need. Get you personal login the SCITEQ shop.

## SERVICE &amp; SUPPORT

# Excellence in service

Your personal contact with us does not end with the commissioning of your test equipment. We also care about the operation of your solution. We want to ensure optimal up-time based on preventive maintenance and efficient problem solving.

We believe service is the key to a fruitful and long lasting cooperation.





## Pipe & fitting test



- **Pressure Test**  
Large range of modular airless pressure systems for all kinds of pressure test; static, dynamic, burst, high capacity, cyclic etc. Unparalleled accuracy no matter the size of sample. For testing according to ISO 1167, EN 12 293, ASTM D1598 and ASTM D 1599.
- **Impact Test**  
Unique frictionless impact tester developed specifically for plastic pipe producers. For safe staircase and round-the-clock tests of pipe diameters up to 2000mm. For testing according to ISO 3127, EN 744, EN 1411 and ASTM D 2444.
- **Leak Tightness Test**  
The most durable and robust solution for testing joints of buried plastic pipe systems. Reliable test results of up to Ø1600 mm – even larger pipe dimensions on request. For testing according to EN1277.
- **Rapid Crack Propagation Test**  
Unique drive ensuring uncompromized accuracy and guaranteed speeds of up to 15,0 meters per second and unparalleled accuracy of +/- 0,1 meter per second. For testing according to ISO 13477.
- **Compression, Ring stiffness, Tensile test, bending test**  
High-end universal testing machines offers a wide range of test used in the plastics industry. According to a large variety of international standards i.e. ISO 527, ISO 6259, ISO 9967, ISO 9969, ASTM D 638.

## Raw material test



Analyze and determine the correct quality of the raw material to ensure end product capabilities with the wide range of high-end equipment including tests DSC, MFR, MVR, density, OIT etc.

- **DSC & OIT Test**  
Determining OIT (Oxidation Induction Time) for polyolefin materials by means of the DSC (Differential Scanning Calorimetry). According to EN 728, ISO 11 357-6.
- **MFI, MFR, MVR, Test**  
High accuracy testing of melt flow index, melt volume flow rate and melt mass-flow rate of a wide range of thermoplastic raw materials (granulate). According ISO 4427, BS 2782, ISO 1133 and ASTM 1238 an equivalent.
- **Density Test**  
bulk density tester determines the apparent density i.e. the mass per unit of volume with accuracy of 0,1g. According to ISO R 60, ASTM D 1895 method A & B.
- **Carbon Black**  
Precise determination of carbon black content in olefin materials like polyethylene or polypropylene that do not contain non-volatile additives or fillers. According to ASTM D 1603 and ISO 6964.



# Preparation



To ensure optimal testing and reliable results the preparation equipment is vital. The standard preparation product range consists of a.o. laboratory saws, mounting machine for large end caps, CNC milling machines, notch millers, conditioning tanks, chambers and ovens.

- **Laboratory Saw**  
Cutting and chamfering pipes in one for a faster, safer and more precise cut. Lab saw for pipes from Ø32 mm up to Ø660 mm and larger on request.
- **End Closure Mounting Machine**  
Optimizing the preparation of large diameter pipe samples. Saving time and cost on mounting and de-mounting large end caps.
- **CNC Copy Milling Machine.**  
Three axes CNC for preparing plastic pipe samples ("dumbbell" "dogbone" specimens) for a.o. tensile tests and elongation tests.
- **Notch Milling Machine**  
Second to none in precision when preparing pipe samples for the notched stress crack resistance test.
- **Thermo Tanks & Ovens**  
Accurate conditioning of any type of sample at uniform temperatures from 0 to 95° degrees. Large range of standard ovens and conditioning chambers for any sample diameter and volume.

# Software



SCITEQ test solutions consists of both hardware and software ensuring delivery of reliable test data. Our solutions are helping our customers prepare for IoT and Industry 4.0. We are developing cloud based communication with both online and local data storing according to our customers preferences.

- **New generation of pressure testing**  
The latest development in software for pressure tests allows for easy and intuitive operation. Quick-to-set-up recipes as well as optimized real time monitoring & logging.
- **User friendly interface**  
The advantages of the new generation of quality test equipment include optimized control, greater efficiency in testing and improved data analysis.
- **Remote access**  
SCITEQ's browser-based software is accessible from any device – any time, anywhere.

"We give our customers a new and revolutionary approach to the operation of pressure testing".





THE NEW GENERATION  
SIGMA PRESSURE TEST SERIES



FINANCING &amp; LEASING

## Financing with SCITEQ

### ■ We help our customers finance the solution

We consider financing an integrated part of being a solution provider. This kind of financing is typically relevant in negotiation on large projects. In case of minor projects involving single or few item products normal commercial terms are agreed upon.

### ■ EKF – an example from the real world

We can assist in finding the best solution on payment transactions for our customers on larger projects. By means of the organisation EKF which is Denmark's official export credit agency, we are able to make it possible and attractive for our customers abroad to buy products and services from Denmark.



FINANCING &amp; LEASING

## Leasing with SCITEQ

With a SCITEQ leasing solution you gain access to our newest high quality test equipment, as well as annual service, access to SCITEQ hotline and free software updates when applicable, without the usual investment requirements. At the end of the leasing period you can either purchase the equipment at residual value, or chose to exchange the equipment to brand new, latest generation equipment, delivered and installed on a new leasing agreement. We will handle the whole process

"The SCITEQ lab saw is running great.  
It has cut our sample prep time in half".

Laboratory manager, WL Plastic



LABORATORY SAW



WORLDWIDE DISTRIBUTION

## Would you like to learn more?

Trust and dialogue is the key to a successful cooperation. Our trusted representatives worldwide are ready to support you locally in close collaboration with the SCITEQ team.

We are always close by. We look forward to hearing from you.

Visit us at

**SCITEQ.COM**

Or send us an e-mail at

**SALES@SCITEQ.COM**

SCITEQ PRIMARY PRODUCT RANGE

# Pipe & fitting test equipment



## SIGMA modular pressure test

For pressure testing plastic pipes and fittings in PE, PEX, PVC, PP, PB etc., glass fibre pipes, tubes and hoses. The system is a modular airless pressure testing system with unparalleled accuracy...



## SIGMALite pressure test

The compact solution. The plug and play is an all-in-one pressure testing unit with integrated high pressure pump and up to 5 independent airless pressure stations.



## SIGMA thermo tank

The compact design of the thermo tank reduces footprint to a minimum while at the same time minimizing the energy consumption, which makes the thermo tank ideal for small laboratory layouts. Constant and uniform temperatures 0-95°. Available in two dimensions.



## ECO-line thermo tanks 0 – 95 C

With the ECO line thermo tanks you get accurate conditioning of any type of sample at temperatures from 0 to 95° degrees Celsius. The ECO Line Thermo Tank is available in 8 dimensions suitable for countless specimens.



## End closures without tie-bar

Model 1520 - With a track record showing product lifetime of more than 30 years the SCITEQ end closures are proven highly durable and cost-effective. In certified stainless steel.



## End closures with tie-bar

Model 1530 - Certified stainless steel end closures with tie-bar. Tightens 100% to the pipe and is a highly durable solution with a proven lifetime of over 30 years.



## End closure – Air-frame for large diameters

Model 1525, Air-frame - Patented design offers easy assembly on larger pipe diameters from 315 to 1600mm – and larger at request. The end closures seal off the sample 100% tight.



## Impact tester B50

The SCITEQ B50 impact tester is developed specifically for plastic pipe producers. The unique frictionless vacuum lifting enables for safe and precise testing of pipes up to Ø 2000 mm.



## Universal testing machines – UTM

The high-end SALT by SCITEQ SXW Universal Testing Machines offers a wide range of test used in the plastics industry. The UTMs perform tensile, compression, and bending tests.



## Thermal cycling system TCA

The SCITEQ thermal cycling TCA offers high accuracy of pressure and flow, auto leak detection and long service life. Open loop series is mainly used to determine the leakage status of composite pipes and fittings when subjected to specified cycling times under specified internal pressure load.



## Rapid Crack Propagation tester

The SCITEQ Rapid Crack Propagation Tester offers exceptional accuracy when testing plastic pipes. The unique drive, ensures stable, accurate and guaranteed speeds of up to 15,0 m/sec.





**Methylene chloride tester – MCT**

The SCITEQ MCT Cabinet automatically performs each step of the Methylene Chloride test, while ensuring both optimal safety and valid results. Offering easy operation with colour touch screen control.



**Point load tester**

The SCITEQ Point Load tester is used for determining the resistance to slow crack growth of polyethylene pipes with external point load.



**Cyclic Pressure Test**

The unique and advanced open-loop system of the SCITEQ cyclic pressure tester is capable of performing pressure tests in the range 0,5 to 60 bar at the highest accuracy in the market.



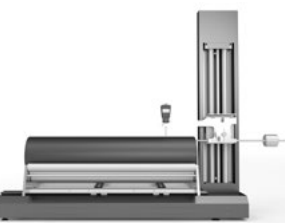
**Leak tightness tester – LTT**

The SCITEQ Leak Tightness Tester seamlessly performs all steps of the test required by the EN1277 standard. The LTT is one of the markets most durable and robust solutions for testing joints of buried plastic pipe systems.



**Burst & High Capacity Pressure Test – HCP**

The SCITEQ high capacity burst & pressure test system (HCP) delivers the most linear burst pressure curve on the market, guaranteeing that you get accurate and valid data.



**Wall thickness measurement gauge**

The smart design of the SCITEQ Wall thickness Measurement gauge allows for fast and accurate 360° measurements of wall thickness and ovality of pipes.

SCITEQ PRIMARY PRODUCT RANGE

**Raw material testing**



**Glycerine test cabinet**

The SCITEQ glycerine test cabinet is designed specifically to allow safe and easy heat reversion testing of plastic pipe samples. For longitudinal (heat) reversion testing of plastic pipe samples.



**Bulk density apparatus**

With the SCITEQ bulk density tester as well as a laboratory weight (optional) accurate to 0,1g it is possible to determine the apparent density i.e. the mass per unit of volume of loose material (powder or granulate).



**Box Loading Test System**

The flexible SCITEQ box loader can perform two methods for testing pipes and fittings or joints for their resistance to deformation and leakage.



**Carbon black tester**

For determination of carbon black content in olefin materials like polye-thylene or polypropylene that do not contain non-volatile additives or fillers.



### DSC OIT analyser

For determining OIT (Oxidation Induction Time) for polyolefin materials by means of the DSC (Differential Scanning Calorimetry).



### HDT Vicat tester

For determining the Vicat softening temperature and the heat deflection temperature under load on plastics and thermoplastics, available with 3 or 6 testing stations.



### Melt flow indexer – MFI 450 Series

The user-friendly MFI combines high accuracy and precision essential for quality control and R&D. Easy operation with colour touch screen control for fully automatic testing.



### Laboratory Balance Weight and Density Apparatus

The SCITEQ balance weight and density tester meet the highest technical weighing requirements.



### Laboratory Balance Weight

The SCITEQ – Kern balance weight meet the highest technical weighing requirements.

## SCITEQ PRIMARY PRODUCT RANGE

# Preparation equipment



### Laboratory Saw

The SCITEQ lab saw is specially designed for laboratory preparation of pipe samples for dimensions from Ø 32 mm up to Ø 660 mm and larger on request. Cutting and chamfering in one go.



### End closure mounting / de-mounting machine

The SCITEQ End Closure Mounting machine optimizes the preparation of large pipe samples – saving time and cost on mounting and de-mounting end closures.



### ECO-line thermo tanks 0 – 95 C

With the ECO line thermo tanks you get accurate conditioning of any type of sample at temperatures from 0 to 95° degrees Celsius. The ECO Line Thermo Tank is available in 8 dimensions suitable for countless configurations.



### Axial notch milling machine

The SCITEQ axial notching milling machine with a precision second to none. For preparing pipe samples for the notched stress crack resistance test at a specified temperature.



### CNC copy milling machine

For preparing plastic pipe samples (sometimes referred to as “dumbbell” specimens or “dogbone” specimens) for e.g. tensile tests and other kinds of elongation tests.





### Laboratory heating oven

Ovens from SCITEQ are state-of-art with fast and accurate temperature control and temperature recovery. Two design series including various models and a large range of sizes/volumes according to customer needs.



### Laboratory freezer

The SCITEQ laboratory freezers cost-effective operation is ensured due to low energy consumption. A large range of sizes/volumes for every need.



### Conditioning and cooling chamber

SCITEQ conditioning chamber is capable of cooling samples up to very large dimensions with a temperature range from room temperature down to -25 degrees C.



### Parallel scratchier

SCITEQ's high accuracy parallel scratchier is for marking pipes around the circumference before carrying out longitudinal (heat) reversion tests. Both a table model and a portable model available.



### Laboratory granulator

For convenient preparation of samples for MFI test and similar small granulating jobs.

SCITEQ PRIMARY PRODUCT RANGE

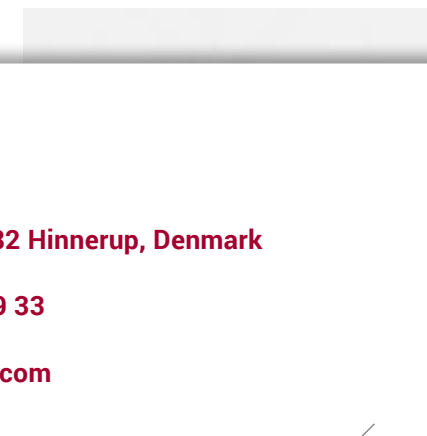
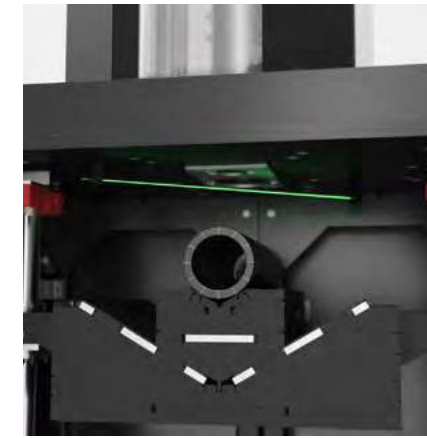
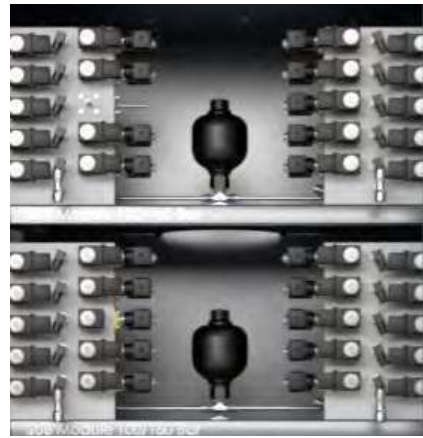
## Software



### SCITEQ software

SCITEQ solutions consists of both hardware and software. Intuitive and user-friendly interface, delivery of reliable test data and comprehensive analysis options.

Experts in  
Pipe Testing.  
We have delivered  
accurate and  
reliable test results  
since 1966.



## SCITEQ

📍 Gamma 3, 8382 Hinnerup, Denmark

☎ (+45) 86 96 19 33

✉ sales@sciteq.com

🌐 sciteq.com



Experience our  
products in 360°  
[360.sciteq.com](https://360.sciteq.com)



Follow us on  
LinkedIn  
[@sciteq-a-s](https://www.linkedin.com/company/sciteq-a-s)



Shop our products  
[shop.sciteq.com](https://shop.sciteq.com)



Join our newsletter  
[sciteq.com](https://sciteq.com)



