

function

SCITEQ heating ovens are produced in order to carry out heat reversion tests, dimension stability tests, accelerated ageing or pressure tests at high temperatures. The ovens can also be used for conditioning any other type of sample requiring a high level of temperature control.

highlights

- high temperature accuracy
- fast temperature recovery
- stainless steel inner casing
- universal oven
- optional temperature logging of test temperature
- optional quick connectors

version 08/2012

features

SCITEQ ovens are state-of-art with fast and accurate temperature control and temperature recovery. Two models of either 400lt or 750lt inner casing volume are available—other sizes on request. Standard is:

- Microprocessor temperature controller. Temperature range: 50° C to 250° C
- Regulation of fresh and exhaust air
- Adjustable temperature upper limit cut out
- Speed setting of the air-circulation fan
- Two stainless steel shelves

Optional equipment:

- Access ports for pressure testing
- Quick connectors inside oven for pressure testing
- Water collection tray with drain in bottom of oven for pressure testing
- Additional stainless steel shelves
- Temperature output for logging of test temperature on PC SCITEQ software
- PC SCITEQ software
- Calibration certificate according to ISO 12880
- Oven door windows

We wish to give our partners the tools to produce to the highest standard, while helping them to produce as cost-effectively as possible with Q.C. tools throughout the factory.

construction

SCITEQ ovens are made of high quality materials, can reach temperatures up to 250°C and are distinguished by extremely short heating and recovery times. Inner casing is made of corrosion-protected stainless steel and the shelves are tilt-proof. The smallest oven can be placed on a table, the bigger ones are supplied with turning wheels. All controls are easily adjusted on the front panel. Heating ovens can be supplied with 1/4" female access ports and quick connections inside for mounting of the sample when used for pressure testing of pipes at higher temperatures than 95° C.



associated equipment

▲ | essential equipment

pressure stations

burst stations

end closures

pressure hoses

pc-sciteq software

end closure mounting

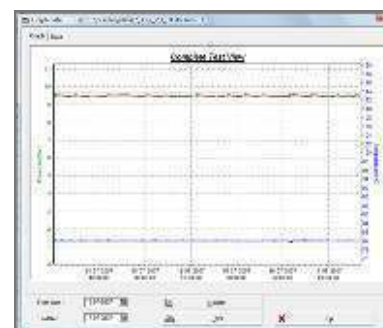
laboratory saw

parallel scratchier

model range	400lt coated exterior and 400lt stainless steel exterior (inner casing volume) 750lt coated exterior and 750lt stainless steel exterior (inner casing volume) other sizes on request	
convection technology	mechanical convection	
temperature range:	50°C to 250°C	
temperature deviation over time	+/- 0.3°C at 150°C for 400 ltr oven +/- 0.4°C at 150°C for 750 ltr oven	
temperature uniformity	+/- 3.0°C or better	
temperature stability	+/- 0.2°C at 150°C	
inner casing material	stainless steel	
electrical supply	single phase 230V+PE, 50 Hz	
power consumption	at 150°C 0.63 kW	
access ports allowing pressure test (optional)	access ports can be fitted to allow for connection of pressure testing equipment to pipe samples inside oven.	
quick connectors (optional)	quick connectors can be fitted to allow end closures to be connected easily	
temperature logging (optional)	serial interface output to log temperature on PC SCITEQ software	
PC SCITEQ software (optional)	log and display oven temperature on PC	
window in door (optional)	optional	
dimensions	400lt	internal: 544x545x1335mm (LxWxH) external: 778x770x1545mm (LxWxH)
dimensions	750lt	internal: 1004x545x1335mm (LxWxH) external: 1261x770x1545mm (LxWxH)
weight	400lt oven:	135kg
	750lt oven:	185kg



View inside heating oven - optional manifolds (access ports) for connecting pipe samples in case connection to pressure testing equipment is needed. Further, the optional sample hanging bars are shown (three pieces in picture above) for hanging pipe samples.



View of temperature graph in PC SCITEQ software

SCITEQ A/S
 Rho 3
 DK-8382 Hinnerup
 Denmark
 Tel: +45 86 96 19 33
 Fax: +45 86 96 24 75
 www.sciteq.com
 sales(at)sciteq.com

associated equipment | essential equipment

pressure stations	burst stations	end closures	pressure hoses	pc-sciteq software	end closure mounting	laboratory saw	parallel scratcher
-------------------	----------------	--------------	----------------	--------------------	----------------------	----------------	--------------------