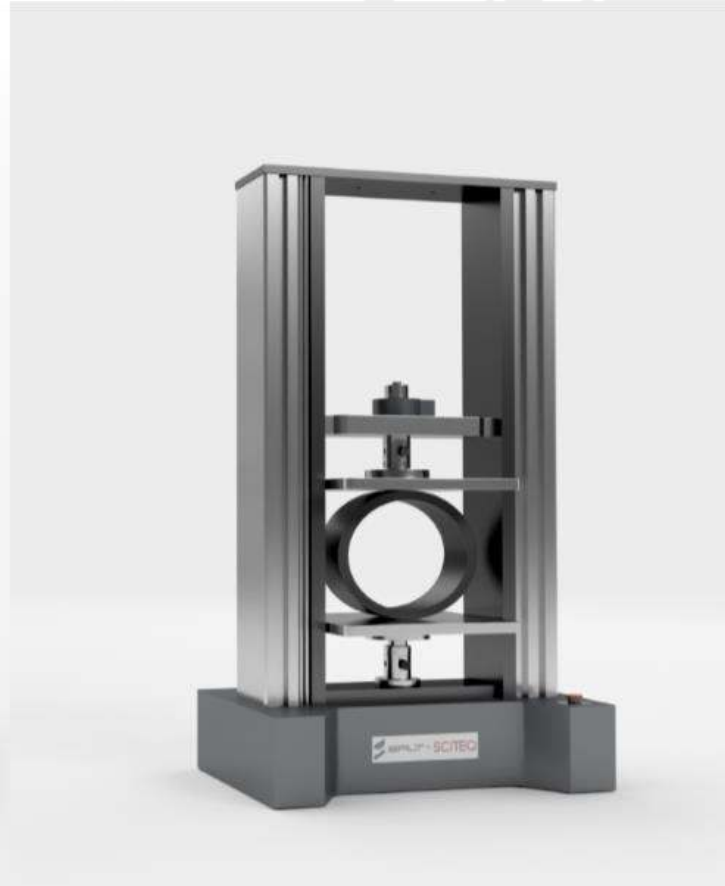


Universal Testing Machines



We help our customer perform even better



Construction

The high-end design, ease of use and high performance, makes the UTMs ideal for testing applications up to 300kN. The UTMs are equally suitable for routine quality control testing as for complex multi-stage tests. The solution is highly customizable, offering you maximum flexibility for both tensile and compression test.



Scope

The SCITEQ SXW Universal Testing Machines offers a wide range of test used in the plastics industry. The UTMs perform tensile, compression, and bending tests according to a large variety of international standards i.e. ISO 527, ISO 6259, ISO 9967, ISO 9969, ASTM D 638.

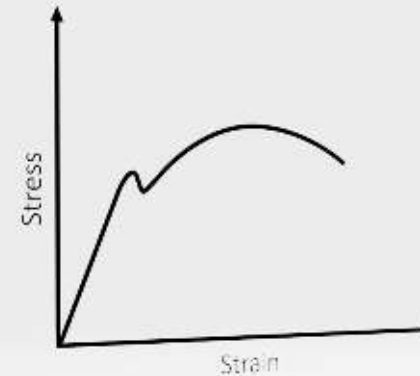
Highlights

- ✓ high accuracy equipment
- ✓ user friendly
- ✓ solid construction
- ✓ customizable test rooms
- ✓ 1, 2, 4 columns
- ✓ speed range 0.01–500 mm/min
- ✓ multiple programmable test set-ups
- ✓ accessories such as extensometers, grips and compression plates
- ✓ high accuracy interchangeable load cells from 10kN up to 300kN

Standards

The SCITEQ SXW Universal Testing Machines enables you to test according to a large variety of international standards i.e. ISO 527, ISO 6259, ISO 9967, ISO 9969, ASTM D 638 .

Please contact us at sales@sciteq.com for further information on the test procedure and please refer to technical specifications in this brochure or contact SCITEQ A/S for more information.





Highly customizable UTM series

To ensure optimal performance, the UTMs are equipped with components of the highest quality, such as Mitsubishi servo motors, Motovario gears from Italy, and German ball screws.

software

The software enables users to know intrinsic characteristics of various materials, such as stress, strain, E-modulus, yield point etc. for material property test such as tensile, compression, bend, flaking tests. The software is easy to use and designed to enable a large range of different test procedures according to various international standards.

Load method

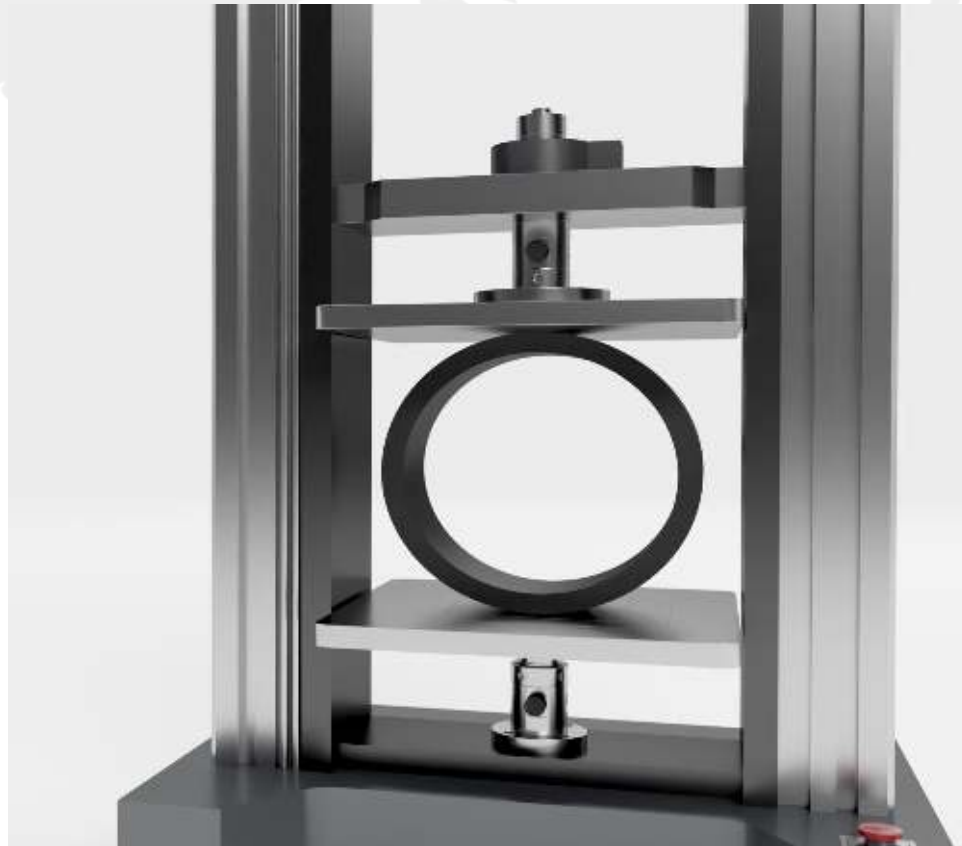
Servo motor (Mitsubishi), electronic control measuring

Extensometer

Encoder type, Position meter, Yield point or compressive type optional

Accessories

A large program of accessories is available: grips, load cells, peel grips, rectangular and circular compression platens, extensometer and various solutions for test of physical characteristics of various materials and products.



CNC copy milling machine

For preparing plastic pipe samples (sometimes referred to as “dumbbell” specimens or “dogbone” specimens) for e.g. tensile tests and other kinds of elongation tests.



Laboratory Saw

The SCITEQ lab saw is specially designed for laboratory preparation of pipe samples for dimensions from \varnothing 32 mm up to \varnothing 660 mm as standard and larger on request. The Laboratory Saw makes cutting and chamfering pipes faster, safe and more precise than ever, with the whole process taking place all in the same time.



Technical Specifications Universal Testing Machines



	SCT1001-10 & 20kN	SCT1002-30 / 1002-50kN	SCT1002-100kN	SCT1002-100kN—4 column	SCT1002-200 kN	SCT1002-300 kN	SCT1000—2kN – single column
Frame capacity	10/20 kN	30/50 kN	100 kN	100 kN – four column	200 kN	300 kN	2 kN
Crosshead speed	0.01 to 500mm/min	0.01 to 500mm/min	0.01 to 500mm/min	0.01 to 500mm/min	0.01 to 500mm/min	0.05 to 500mm/min	0.01 to 500mm/min
Crosshead travel	1200mm	1300mm	1400mm	2800mm	1200mm	1500/1600mm	1200mm
width between columns	460mm	470mm	500mm	950mm	550mm	660mm	-
Stroke resolution	0.001 mm	0.001 mm	0.001 mm	0.001 mm	0.001 mm	0.001 mm	0.001 mm
Force range	4 steps	4 steps	4 steps	4 steps	4 steps	4 steps	4 steps
Controller	LCD Digital indicator	LCD Digital indicator	LCD Digital indicator	LCD Digital indicator	LCD Digital indicator	LCD Digital indicator	LCD Digital indicator
Power supply	220VAC 50, 60Hz, single phase	220VAC 50, 60Hz, 3 phase	220VAC 50, 60Hz, 3 phase	220VAC 50, 60Hz, 3 phase	220VAC 50, 60Hz, 3 phase	220VAC 50, 60Hz, 3 phase	220VAC 50, 60Hz, 3 phase
Dimensions	850 x 650 x 1500mm	850 x 650 x 1500mm	850 x 650 x 1500mm	850 x 650 x 1500mm	850 x 650 x 1500mm	850 x 650 x 1500mm	850 x 650 x 1500mm
Weight	200 kg	600 kg	1200 kg	1500 kg	1200 kg	1500 kg	70 kg



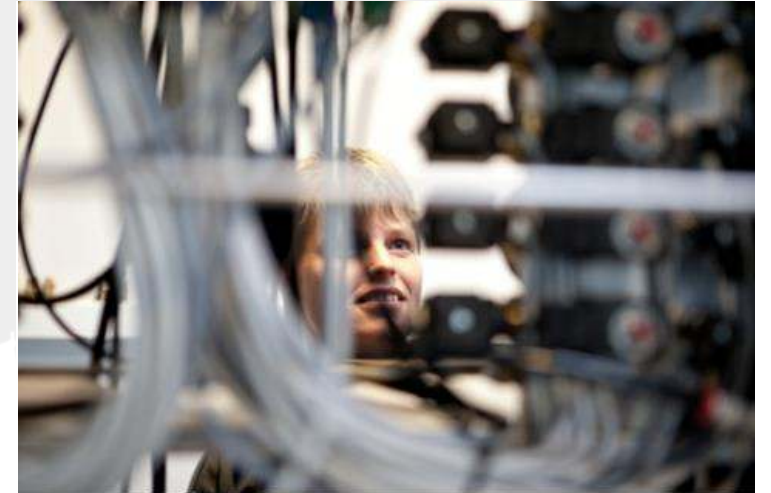
Installation & Training

SCITEQ offers onsite installation of new SCITEQ equipment and onsite or remote training of the operating personnel that are going to use the equipment.



Service agreements

SCITEQ offers service agreements for all SCITEQ equipment, meaning specialized service engineers will visit the customer annual for service and calibration of equipment.



Support online & on-site

SCITEQ offers online and on-site support on all SCITEQ products, for fast and effective problem solving, training, setup, etc.