

SIGMA lab saw



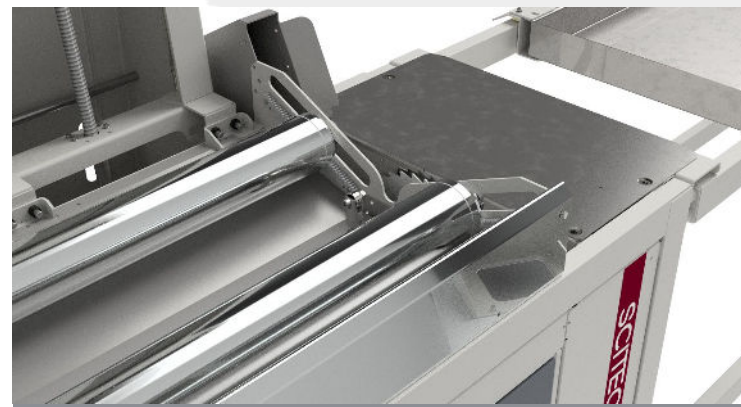
We help you perform even better



## Scope

The SIGMA Saw makes cutting and chamfering pipes faster, safe and more precise than ever, with the whole process taking place all in the same time.

The lab saw is suitable for testing according to ISO 1167, ASTM D1598 and ASTM D1599



## Range

The saw is specially designed for preparation of pipe samples in diameters from  $\varnothing 100$  mm up to  $\varnothing 800$  mm as standard at any length between 300 mm (12 inches) to 1900 mm (75 inches) larger on request. Supplemental rollers are supplied as standard. Minimum wall thickness: 5 mm (3/16 inches) and max. wall thickness: 70 mm (2 3/4 Inches). The solution allows for the use of predefined recipes, making it easy to get started no matter the material, thickness or diameter of the pipe.



## Function

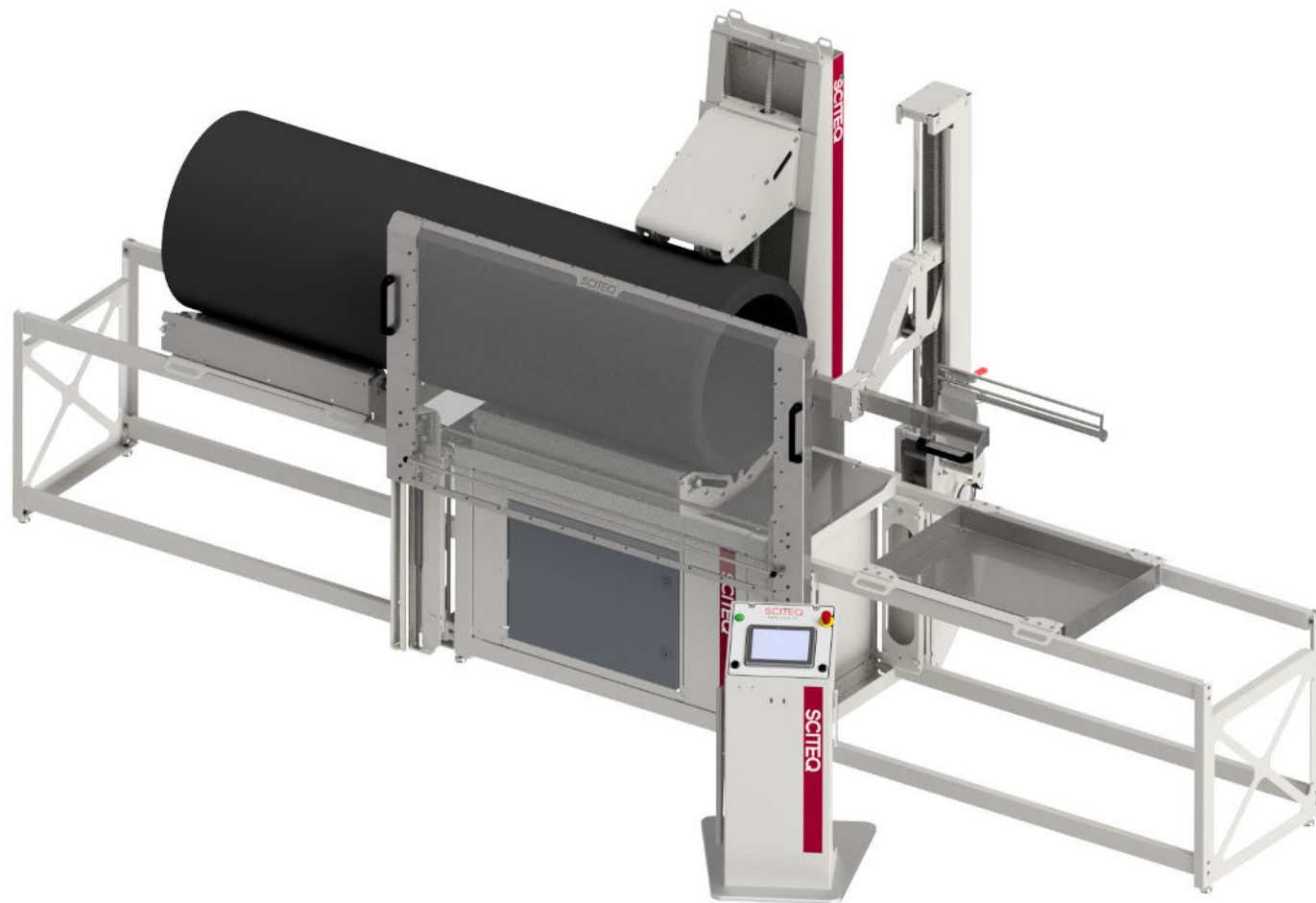
The SIGMA lab saw has adjustable underdrive rollers enabling cut of any pipe surface and diameter including corrugated pipes with no use of extra tools. The tower rollers are balanced for cutting out-of-round pipes. Tower rollers can be fitted with rotating edges or rubbers to eliminate longitudinal slipping of special pipe surfaces/materials. The saw is controlled from the intuitive remote control included.

# Highlights SIGMA saw

SCITEQ

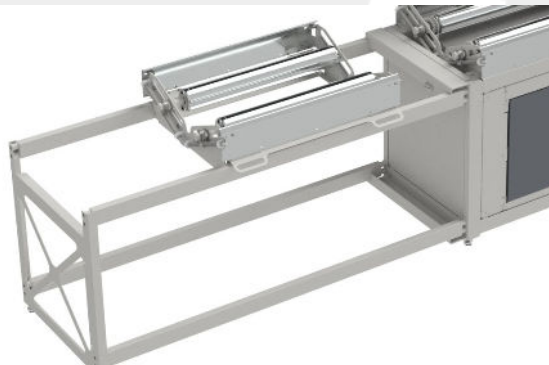
## *Highlights*

- ✓ *Recipe library*
- ✓ *Cutting & chamfering in one go*
- ✓ *For pipe sizes DN100-800 or larger on request*
- ✓ *Highest accuracy in the market*



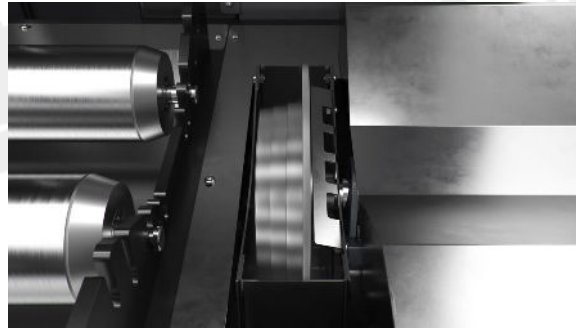
# Features SIGMA saw

SCITEQ



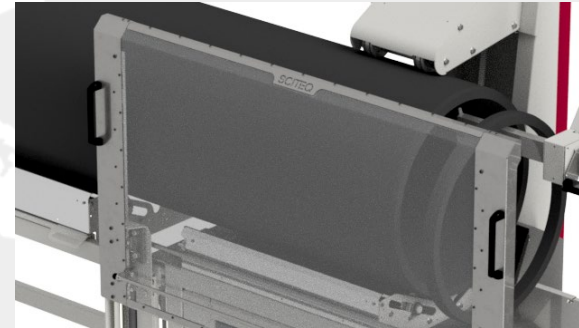
## Conveyer

The conveyer table enables easy handling and feeding of the pipe to the cutter according to selected recipe. After the pipe is placed on the adjustable sledges and support rollers, the pipe is conveniently moved up to saw blade.



## Fast and easy

The lab saw makes cutting and chamfering pipes faster, easier and more precise than ever, with the whole process taking place all in the same time. The solution allows for use of predefined recipes incl. OD and thickness enabling the automatic cut and chamfer process in one go.



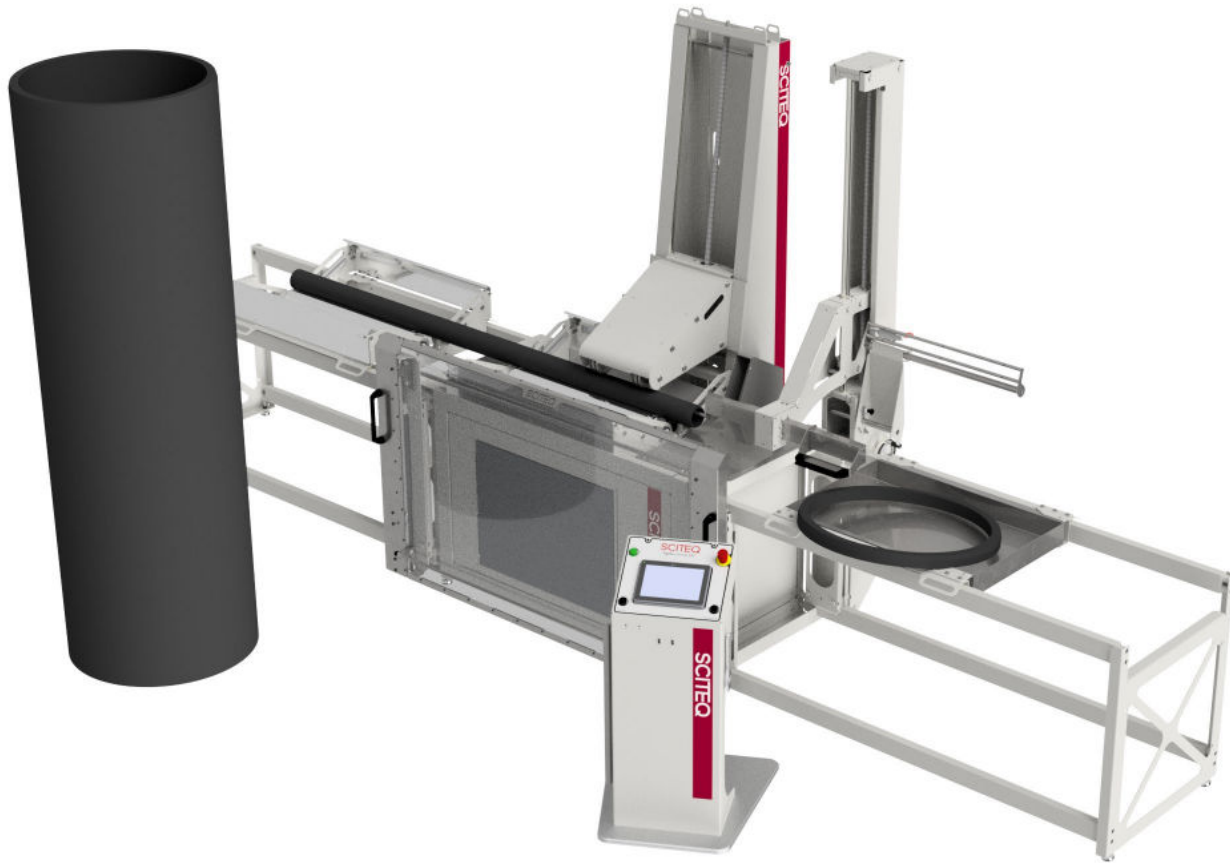
## Control

The saw is remote controlled from the touch screen stand allowing the operator to initiate a cut from a safe distance. The chip guard shield is available as optional add-on as well as the chip/swarf exhaust is prepared for the optional vacuum separator bag.



## Specimen surface & diameter

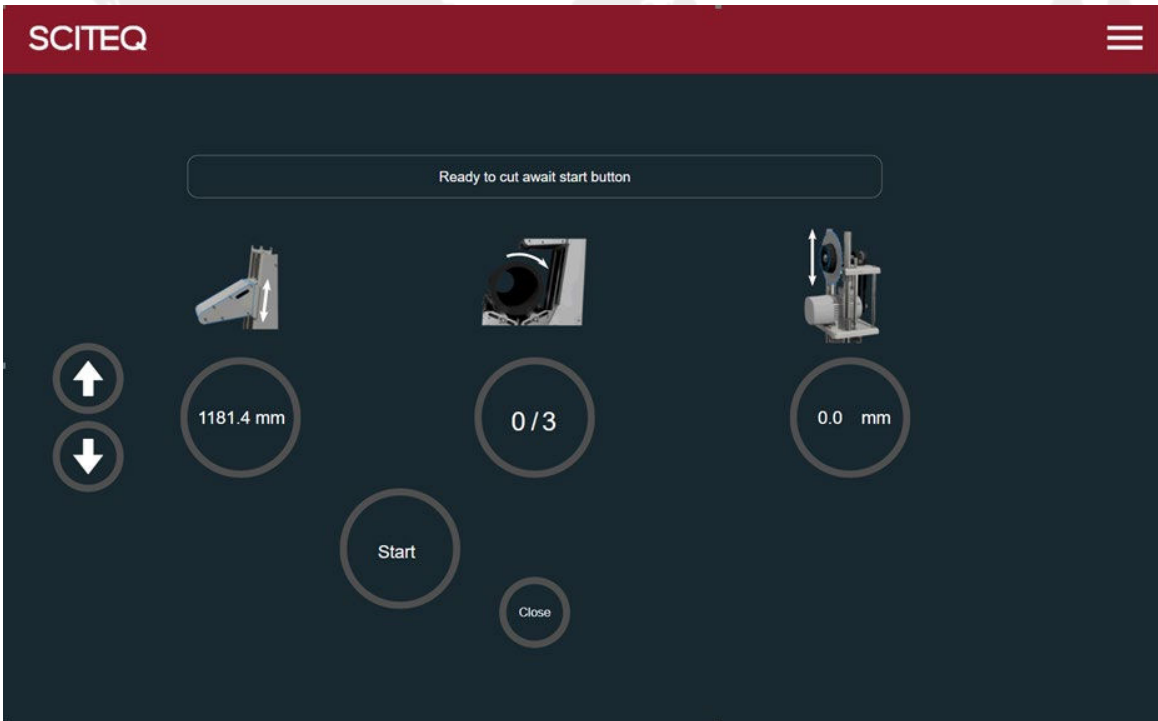
Lab saw feature underdrive rollers, individually adjustable to accommodate special combinations of pipe surface and diameters. The tower rollers are balanced ensuring a clean cut even on out-of-round pipes or pipe ovality.



## Pipe cut-off catcher & stop

For cut-offs of pipe diameters from DN 100 to 800 and cut length up to 400 mm. Ensure samples are arranged and handled properly after the cut. The pipe catcher stops and catches even thin 'slices' of large diameter pipes.





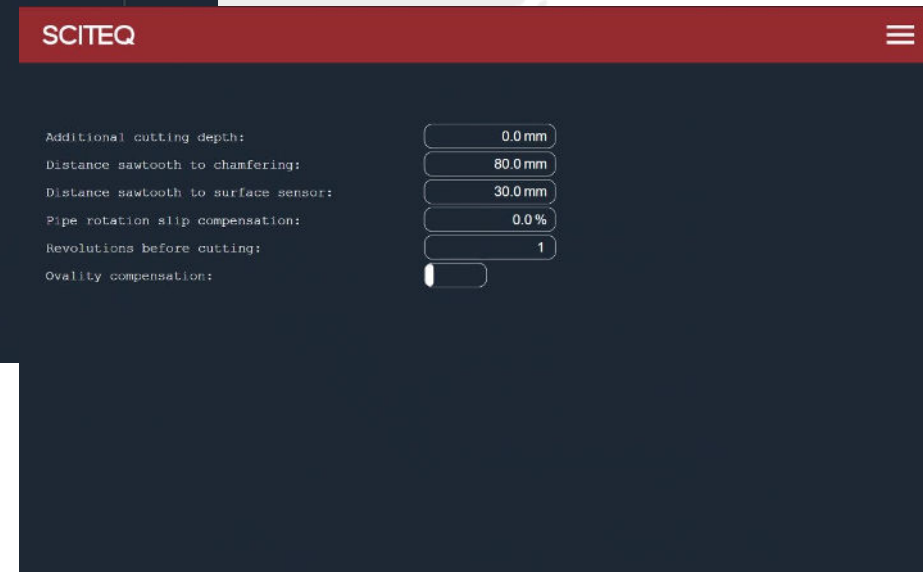
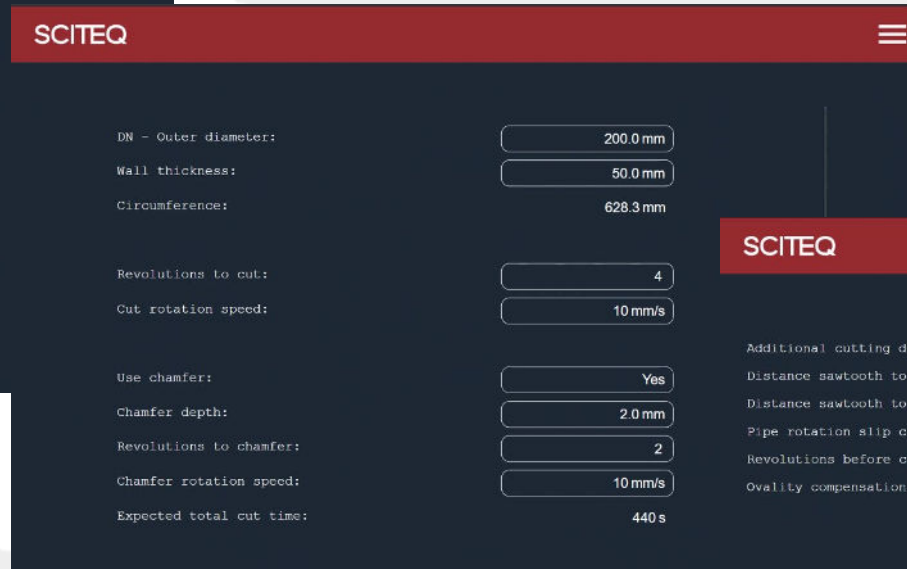
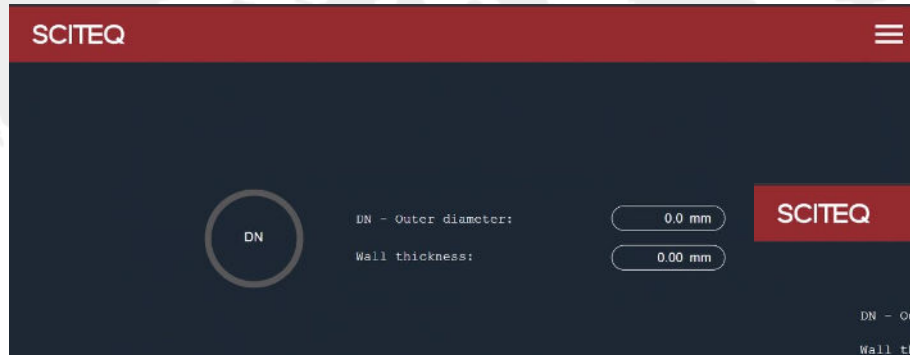
SIGMA saw main screen



## SIGMA software

The SIGMA saw is to be operated from a safe distance. A two-hand switch located under the touch screen mounted on floor stand.

The SIGMA software included offers easy and intuitive operation. The software offers a recipe system enabling accuracy in every cut, quick repetition of cuts, out-of-round compensation etc.



## Recipe system

The start screen of the SCITEQ SIGMA Saw software allows you to make a new or choose an existing recipe. The recipe function enables quick setup of recipes via the recipe wizard guiding the operator step by step.

The saw can be programmed to chamfer the pipe automatically in an 15° angle after each cut.

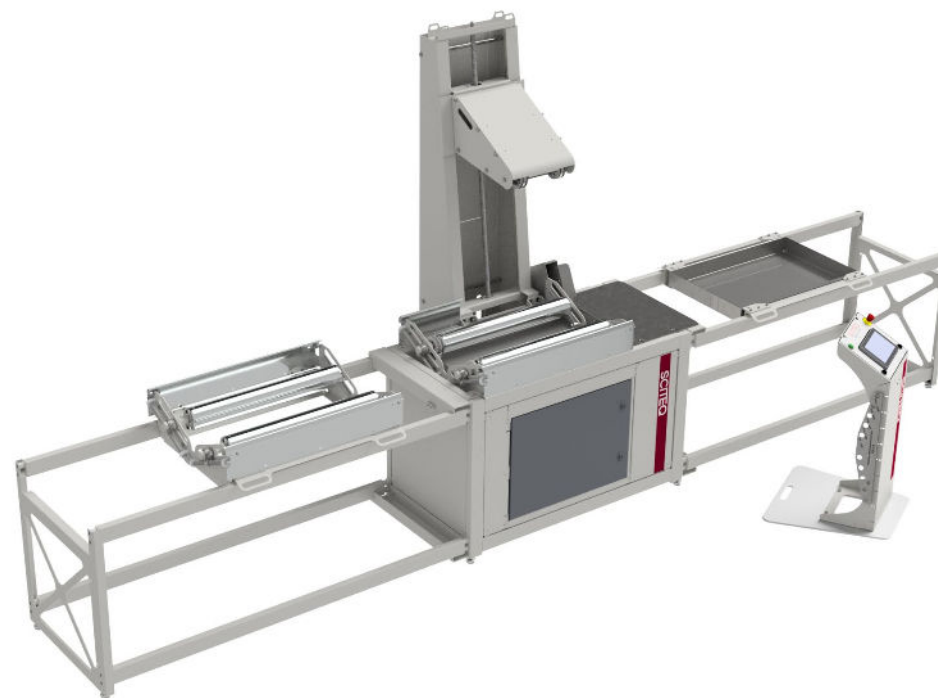
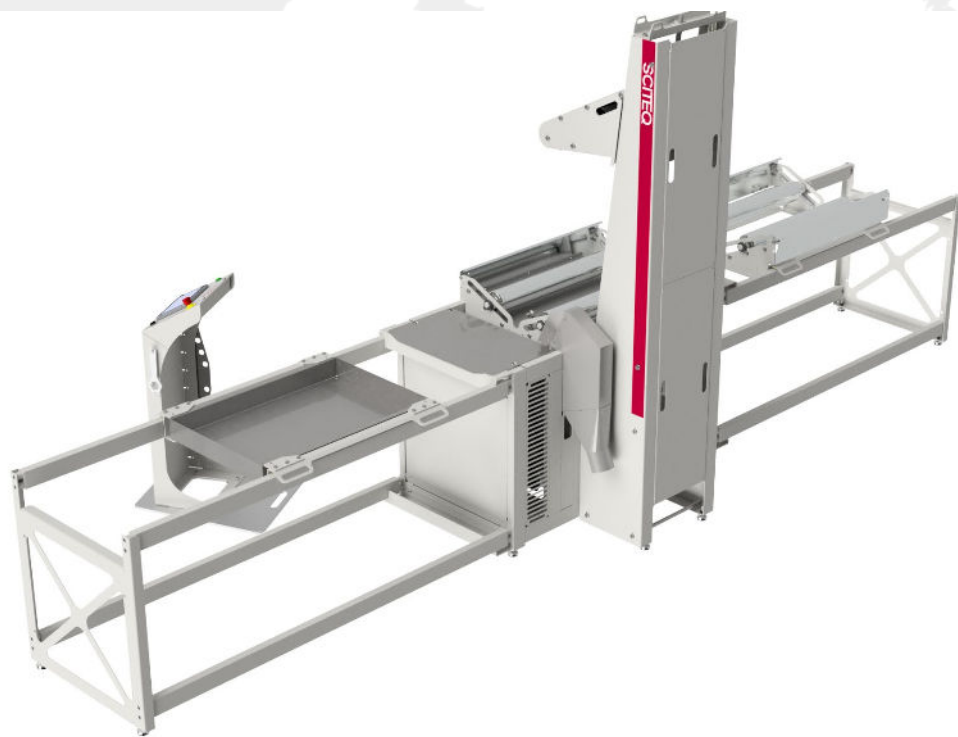
# Technical Specifications SIGMA saw



	Standard model
Pipe range capacity [mm]	OD100– OD800mm (OD4 inch - OD32 inch)
Wall thickness range capacity [mm]	5 mm - 70 mm (1 3/16 inch - 2 3/4 inch)
Cutting materials	PE, PP, PVC and similar/others on request
Pipe length capacity	Standard 3200 mm (126 inch)
Pipe cut (sample) capacity	Recommended max. 1.900 mm (75 inch)
External dimensions (incl. roller table) LxWxH	L5617 x W1235 xH2525 mm
Weight with standard conveyor table [kg]	Approx: 850
Optional chamfer sequence	√ (15°)
Fully automatic recipe cutting control	√ (Memory for 100 recipes)
Export/import of recipe	√
Pipe "cut off" catcher	Optional (max. pipe length 400 mm)
Exhaust swarf removal	Optional (recommended)
Max. pipe concentricity	Concentricity of the pipes is recommended to be within ±2% of the outside diameter to prevent horizontal movement.
Chip guard shield	Optional (recommended)
Power supply	According to customer specifications (standard: 3x 400 V + neutral, 50/60 HZ)
Power consumption	Approx: 3,5 KW, 5 A
Material: frame and coverplates	S235JR (Powder coated)*
Operation temperature [°C]	1 - 40
Storage temperature [°C]	-20 – 50

# Views of SIGMA saw

SCITEQ

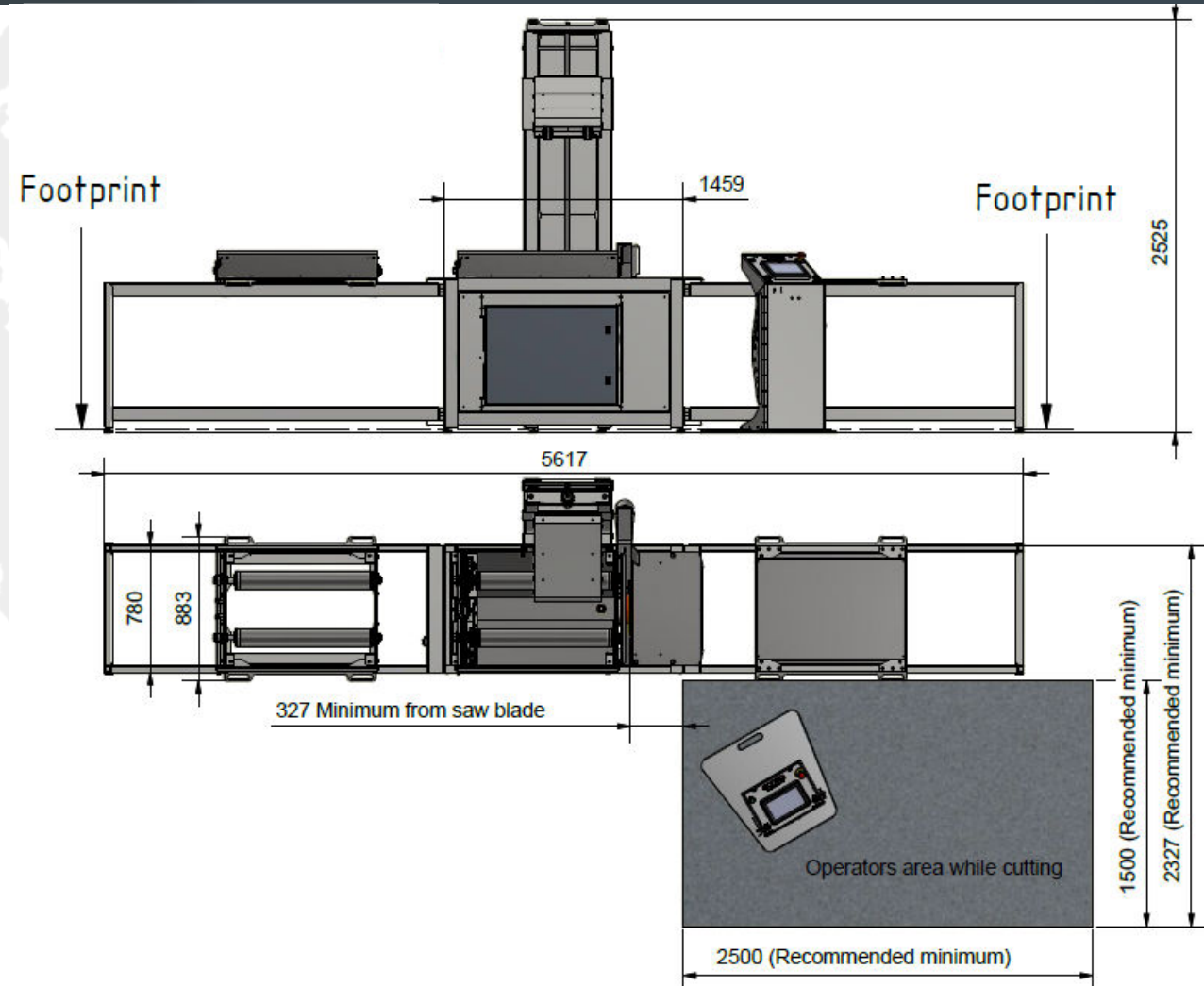


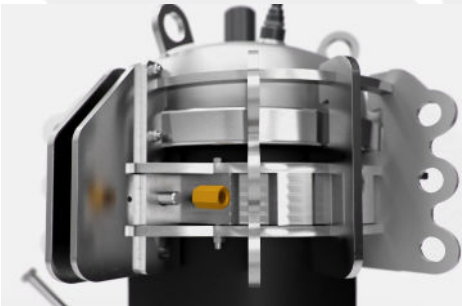
# Dimensions SIGMA saw



**Dimensions**  
SCITEQ Laboratory Saw consists of the cabinet and conveyer table. Conveyer table can be configured according to customer requirements.  
External dimensions: L5617 x W1235 x H2525 mm + controller on stander.  
Weight from 850 kg.  
Shipped and delivered in 3 colli.

NOTE! Please refer to table on following page for dimensions according to above drawings.





## SCITEQ End closures

SCITEQ is supplier of various ranges of end closure suitable for almost any purpose. Within a range of  $\varnothing 8$ - $\varnothing 1600$  mm, with or without tie-bars.



## SCITEQ SIGMA Impact tester

The innovative closed vacuum system of the B50 Impact Tester is invented by SCITEQ. The frictionless environment inside the falling tube ensures not only accurate results but also fewer mechanical parts to maintain.



## Pressure Test Equipment

For pressure testing plastic pipes and fittings in PE, PEX, PVC, PP, PB & glass fibre pipes. The system is a modular airless pressure testing system with unparalleled accuracy no matter what size sample is connected to the system. Solutions can contain from 5 to 50 individual pressure stations per cabinet.



## SCITEQ MCT cabinet

The Methylene Chloride Temperature Test Cabinets from SCITEQ can be used both for MC and MCT test. The cabinet has automatic sample lifting system, lifting up sample after end test.



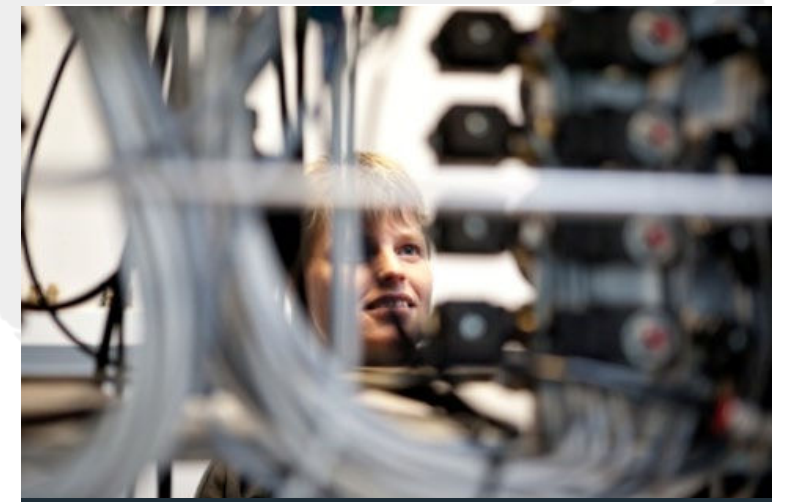
## Installation & training

SCITEQ's trained service technicians perform onsite installation of your new SCITEQ equipment as well as onsite or remote training of your operating personnel who will be using the equipment.



## SCITEQ Care

You will find the level of service suitable for your test setup with SCITEQ Care. SCITEQ service engineers will visit you annually to perform the best service and calibration. With SCITEQ Basic, More or All Care package you gain access to a long list of advantages, discounts and free support from SCITEQ skilled technician. [Learn more about SCITEQ Care](#)



## Support online & on-site

SCITEQ offers online and on-site support on all SCITEQ products, for fast and effective problem solving, training, setup, etc. If you have an unforeseen challenge or you need advise asap, you can contact [service@sciteq.com](mailto:service@sciteq.com) or call us for urgent support.