

function

SCITEQ's own Windows based PC software enabling remote control, test logging and report generation. Software is compatible with all of the SCITEQ-2000 generation of pressure testing systems. To ensure easy and flexible operation, we have launched a movable user-friendly **touch screen solution**.

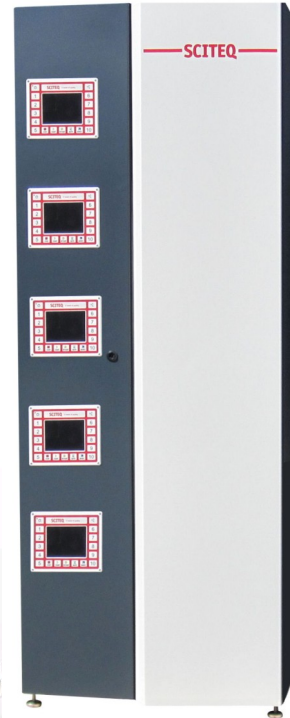
highlights

- flexibility
- touch screen solution
- upgradeable
- system integration
- documented testing
- unique design
- intuitive operation
- Windows based

document results

Document your pressure testing with SCITEQ's Windows based PC software package. **PC SCITEQ** offers the system integration and login facilities to satisfy the most demanding users.

One of the many features is the possibility of **online support** via safe internet connection. This means that upload of software updates, trouble shooting as well as remote control of PC SCITEQ/SCITEQ-2000 is an option.



PC SCITEQ allows you to print test reports to document and present all test results. In order to customise your own test reports it is possible to implement a **logo** of your own choice.

The optional **touch screen** allows a great deal of flexibility. The modern and up-to-date design will suit any laboratory. Place the PC stand where it suits you and enjoy easy access to all test parameters and data. The working height is pleasant and ergonomically correct.

Worldwide Pipe Business Inc.
Pipestreet
9999-99 PipeCity
England

YOUR LOGO

| | | | |
|--------------------------------------|--|----------------------------------|------------------|
| Product details | | Pressure Test Details | |
| Test number | 7 | Operator | Mr. Smith |
| Description | Test pipe 640 PH10 | Station | 2 |
| Production no. | B10202040 | Set Pressure | 8.60 [bar] |
| Test type | 100 hrs. / 80°C | Hysteresis | 0.09 [bar] |
| Customer | 89 Customer Streetname 1234 London | Alarm limit | 0.19 [bar] |
| | | Max. Pressure | 10.27 [bar] |
| | | Leak rate | 20 |
| Pressure Test Results | | Pressure Test Temperature | |
| Total test time | 170:00 hours | Tank no. | 1 |
| OK time | 166:03 hours | Max. temp. | 80.20 [°C] |
| Current test time | 165:00 hours | Min. temp. | 78.80 [°C] |
| Out of tolerance time | 0:02 hours | Set temperature | 80.00 [°C] |
| Power failure time | 0:00 hours | Hysteresis | 1.00 [°C] |
| Test comments | | Start | |
| Your comments can be written here... | | Rise time | 60 sec. |
| | | Pressure | 68.80 [bar] |
| | | Actual time | 0 sec. |
| | | Actual pressure | 0.00 [bar] |
| Dates | | | |
| Start date of test | 10-07-2007 11:20 | | |
| End date of test | 17-07-2007 00:28 | | |
| Date of print | 20-02-2008 14:28:03 | | |
| Complete Test View | | | |
| | | | |
| Pr. version = 24 09 2007 7.44 | | Test approved by | Date .../.../... |
| 832 version = 13-10-2006 | | | |

PC SCITEQ test report

We wish to give our partners the tools to produce to the highest standard, while helping them to produce as cost-effectively as possible with Q.C. tools throughout the factory.

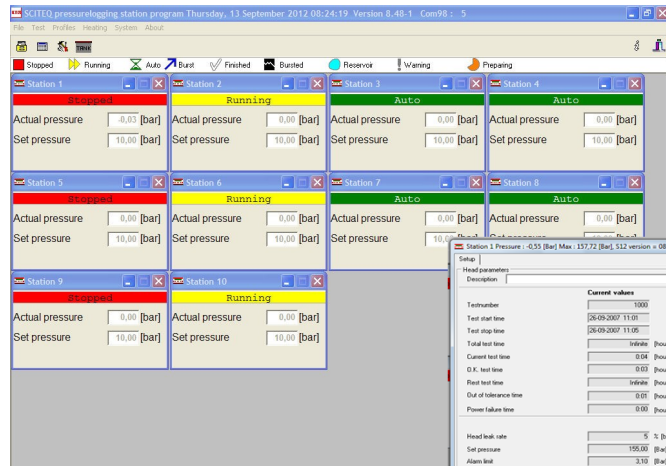
associated | equipment ▲ | essential equipment

pressure stations

thermo tanks

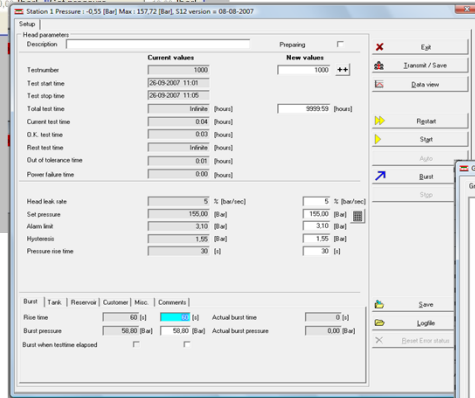
end closures

hoses



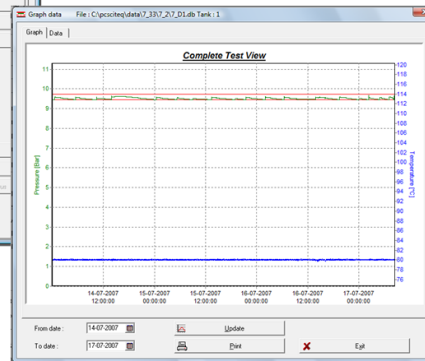
Operator interface

With the addition of PC SCITEQ, your system can step up to another level, full documentation of testing, remote station control, database storage of results and operator entered comments. The standard operator interface shows the most important information and the stations' status at a glance.



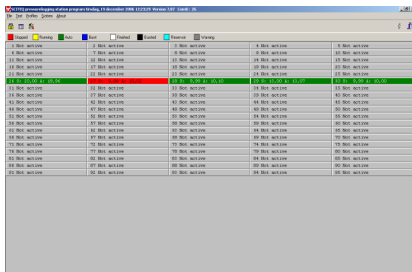
Test setup

All test data and associated controls are intuitively placed and allow the user fast and accurate control of testing.



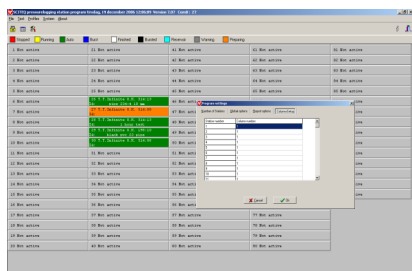
Test results

Both current and historical data can be viewed in graphical format allowing easy identification and verification of test conditions. At any time a printout can be made of the current test including test parameters and graphical representation of the entire test period.



Multi view

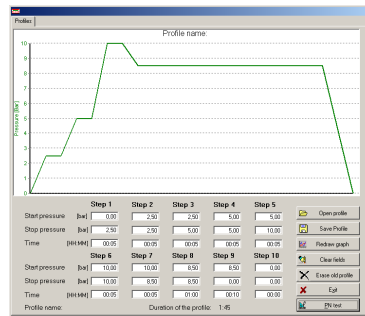
Multi-View window Monitor up to 150 stations at one time.



Tank view

Tank-View window Show your test stations in logical tank groups.

Additional software features



PN tests and Step tests



Touch panel (option)

Control everything via the Design line touch panel.



Touch screen
Nice and easy

SCITEQ A/S

Rho 3
DK-8382 Hinnerup
Denmark
Tel: +45 86 96 19 33
Fax: +45 86 96 24 75
www.sciteq.com
sales(at)sciteq.com

associated | equipment | essential equipment

pressure stations

thermo tanks

end closures

hoses